

# **DAILY TECHNICAL, 13 APRIL 2020**

**PT PROFINDO SEKURITAS INDONESIA**

**GD PERMATA KUNINGAN LT 19  
JL KUNINGAN MULIA KAV 9C GUNTUR SETIABUDI JAKARTA SELATAN 12980**

**TELP +62 21 8378 0888**

**EMAIL : CUSTOMERSERVICE@PROFINDO.COM**

**WWW.PROFINDO.COM | PROCLICK.PROFINDO.COM**

# JAKARTA COMPOSITE INDEX



## PREVIOUS 9 APRIL 2020

CLOSING	4649.079 +0.484%
TRANSACTION	IDR 6.73 TRILLION
FOREIGN NETT	IDR 514 BIO (SELL)

## PREDICTION 13 APRIL 2020

**BULLISH**  
**RANGE 4600-4800**

HAMMER  
STOCHASTIC : OVERBOUGHT  
MACD : HISTOGRAM POSITIF DAN UPTREND

# TECHNICAL RECOMENDATION



**TOWR – PT SARANA MENARA NUSANTARA TBK**

CLOSING 9/4/2020 RP 700 (+2.2%)

**TRADING BUY**

**TRADING AREA 680-750**

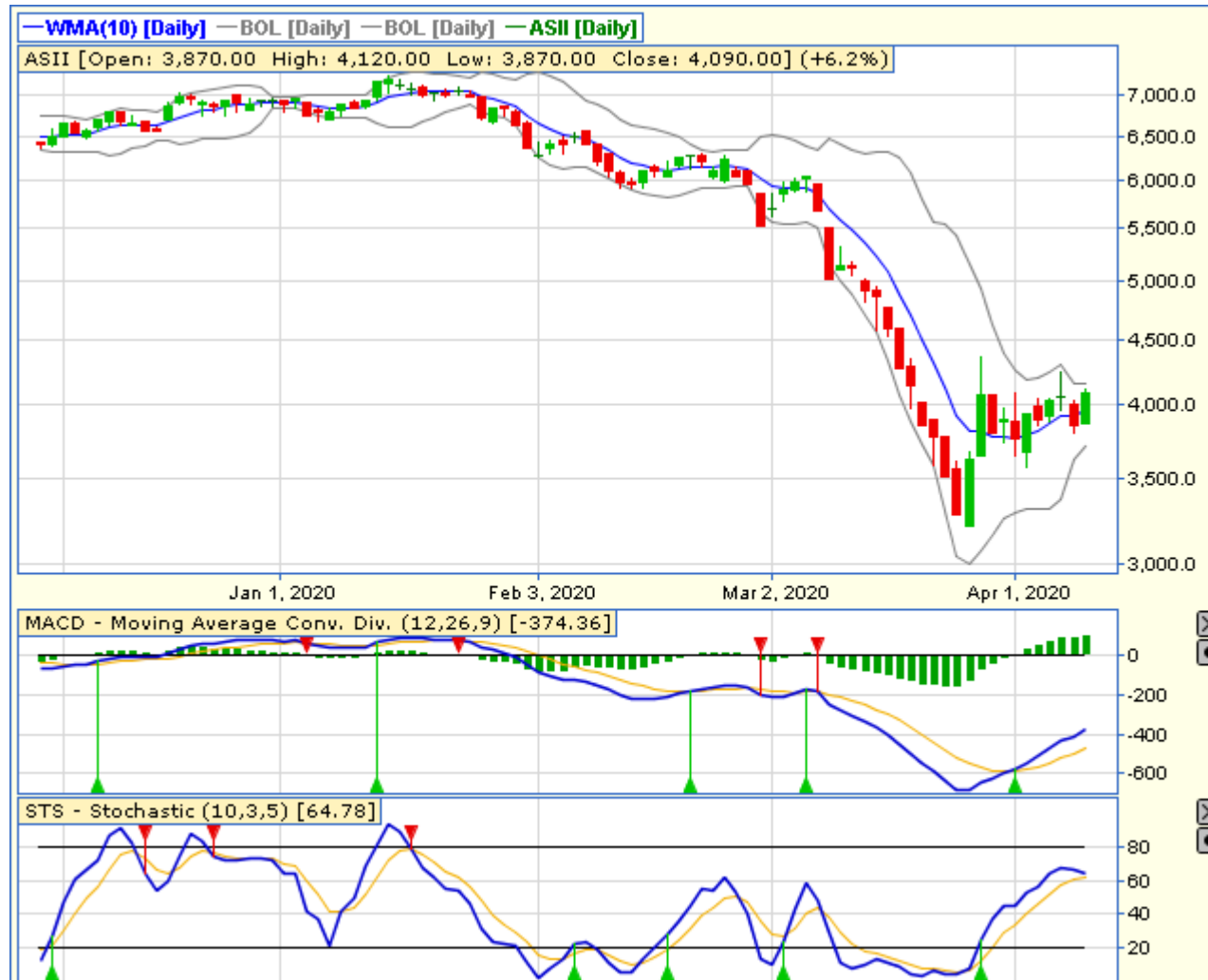
**STOPLOSS < 680**

LONG LEG DOJI

STOCHASTIC : UPTREND

MACD : HISTOGRAM POSITIF DAN UPTREND

# TECHNICAL RECOMENDATION



**ASII – PT ASTRA INTERNATIONAL TBK**

**CLOSING 9/4/2020 RP 4090 (+6.2%)**

**BUY**

**TARGET PRICE 4250**

**STOPLOSS < 4050**

**BULLISH ENGULFING**

**STOCHASTIC : UPTREND**

**MACD : HISTOGRAM POSITIF DAN UPTREND**

# TECHNICAL RECOMENDATION



**TPIA – PT CHANDRA ASRI PETROCHEMICAL TBK**

CLOSING 9/4/2020 RP 7375 (+1.4%)

**BUY**

**TARGET PRICE 7725**

**STOPLOSS < 7275**

CUP & HANDLE

STOCHASTIC : UPTREND

MACD : HISTOGRAM POSITIF DAN UPTREND

# TECHNICAL RECOMENDATION



**BSDE – PT BUMI SERPONG DAMAI TBK**

**CLOSING 9/4/2020 Rp 845 (+5.6%)**

**BUY**

**TARGET PRICE 915**

**STOPLOSS < 830**

**HAMMER**

**STOCHASTIC : UPTREND**

**MACD : HISTOGRAM POSITIF DAN UPTREND**

# TECHNICAL RECOMENDATION



## ELSA – PT ELNUSA TBK

CLOSING 9/4/2020 RP 226 (+9.7%)

**BUY**

**TARGET PRICE 244**

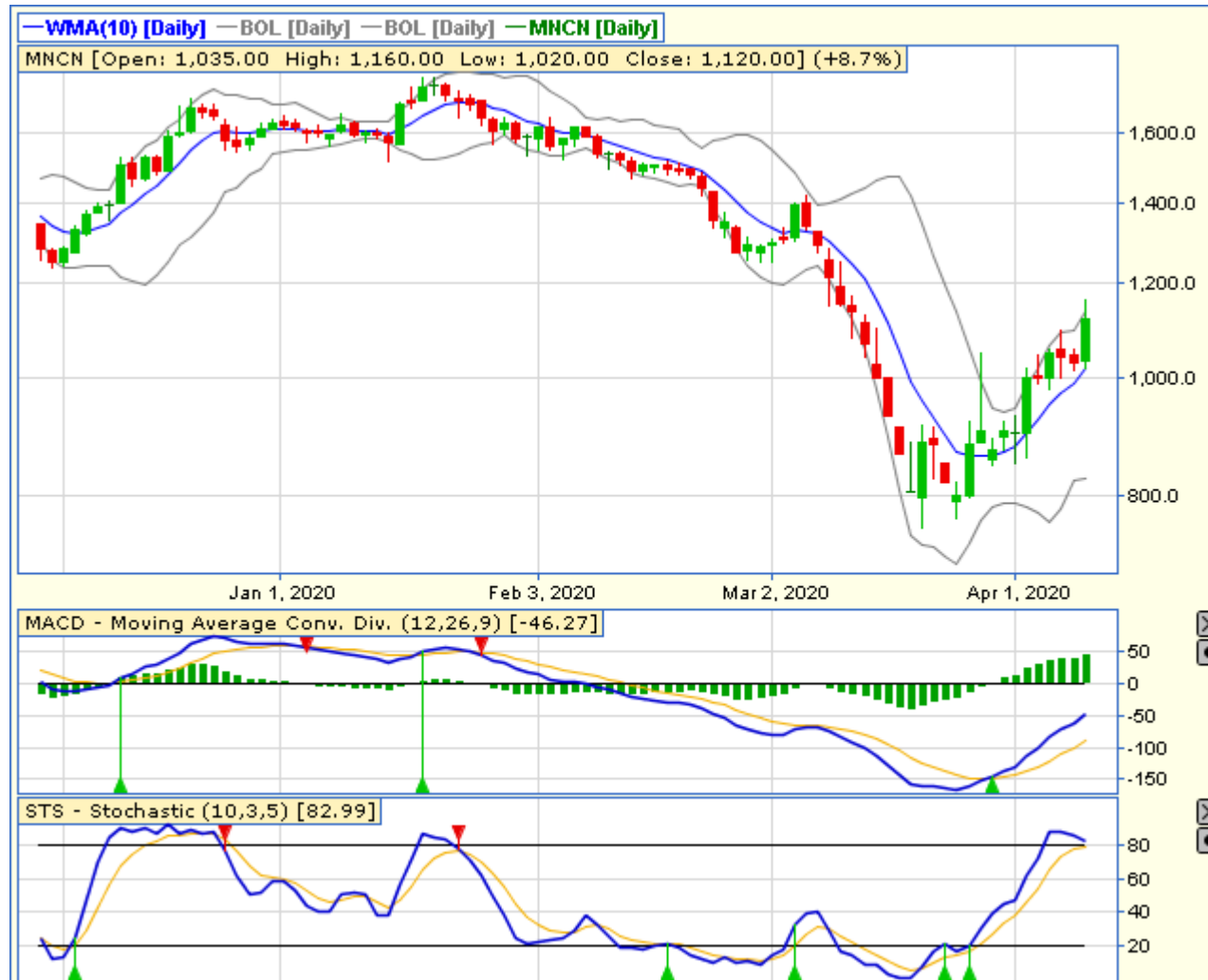
**STOPLOSS < 220**

BREAK OUT CUP & HANDLE

STOCHASTIC : UPTREND

MACD : HISTOGRAM POSITIF DAN UPTREND

# TECHNICAL RECOMENDATION



**MNCN – PT MEDIA NUSANTARA CITRA TBK**

**CLOSING 9/4/2020 RP 1120 (+8.7%)**

**BUY**

**TARGET PRICE 1420**

**STOPLOSS < 1100**

**BREAK OUT RISING WEDGE**

**STOCHASTIC : UPTREND**

**MACD : HISTOGRAM POSITIF DAN UPTREND**



# RESEARCH TEAM



**YULIANA**

**RESEARCH ANALYST &  
CORPORATE FINANCE**



**DIMAS WP PRATAMA, CSA**

**TECHNICAL ANALYST**

# EQUITY CAPITAL MARKET TEAM



**JESSIE JAMES**

**HEAD OF EQUITY SALES**



**PRASETYO NUGROHO**

**HEAD OF DEALING ROOM**



**GABRIELLA PRATIWY**

**HEAD OF ONLINE TRADING**